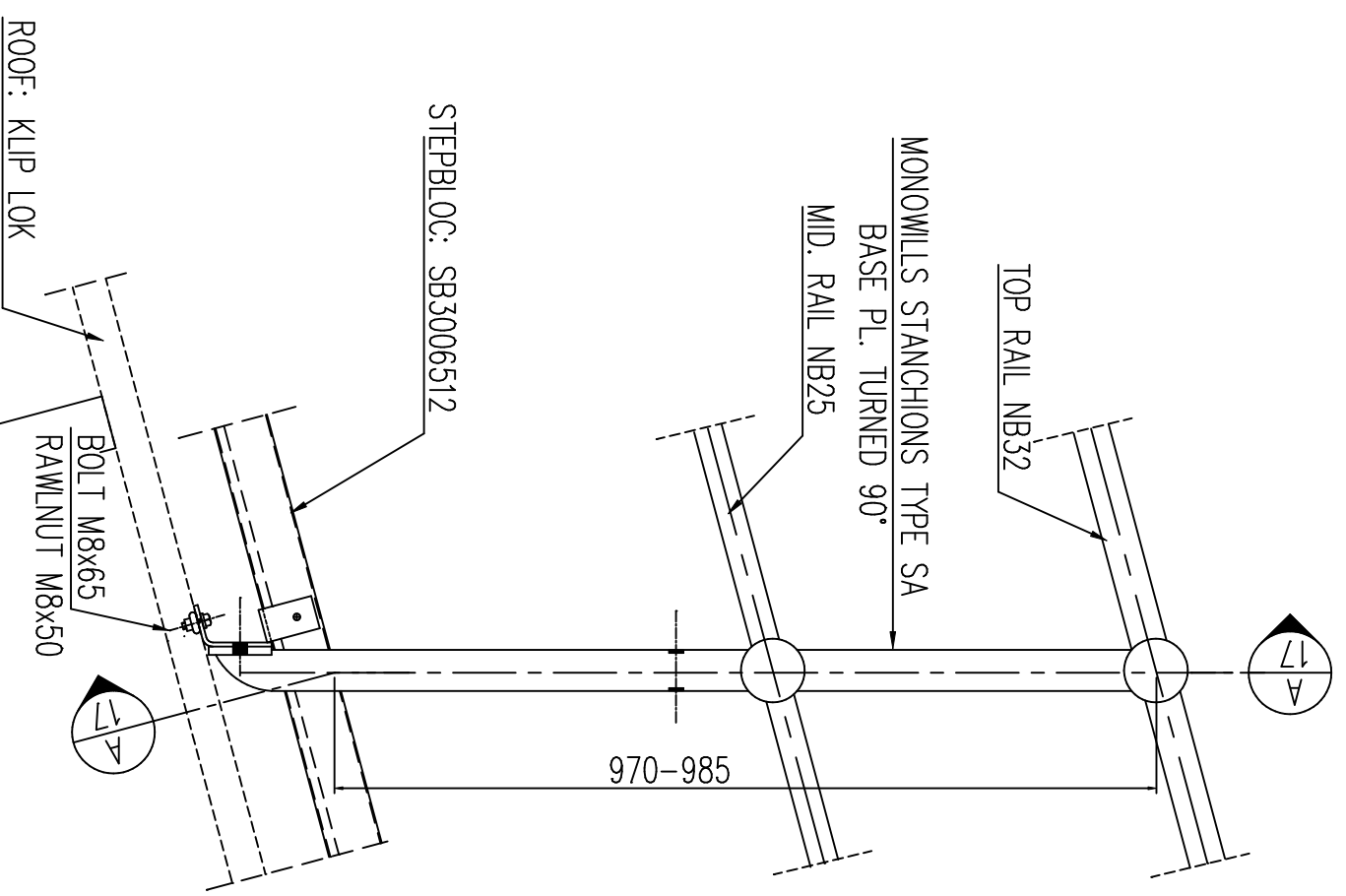


TYPICAL SECTION FOR  
WALKWAY UP ROOFS  
PITCHED OVER 5°



VIEW "A"  
REF. HBRA 17



TOTAL ACCESS & SAFETY SYSTEMS  
"ROOFWAYS" ROOF WALKWAY SYSTEMS

HALLWELD-BENNETT P/L  
ABN 56 008 123 037  
14 NINTH ST. WINGFIELD SA 5013  
PH. (08) 8347 0800 FAX (08) 8347 0230

| REV. | DRG. No. |
|------|----------|
| E    |          |
| D    |          |
| C    |          |
| B    | HB-RA    |
| A    | 18       |